

# Windmill Pre-School Newsletter



Templefield Lower School,  
Malham Close, Flitwick  
Bedfordshire, MK45 1AJ

01525 719144  
www.windmillpre-school.org

## Welcome Back!

Hope you all had a wonderful Summer break. We would like to welcome all the new children and their families starting this term. Here is the Autumn term Newsletter.

### Autumn Term Themes:

Our theme for the whole of Autumn term is “**Exploring with Harry and the Dinosaurs**” – based around the popular series of books.

The main topic for the first couple of weeks as we greet our new children, is “**Welcome to Pre-school**”, helping them to settle in and feel safe and secure in their new surroundings.

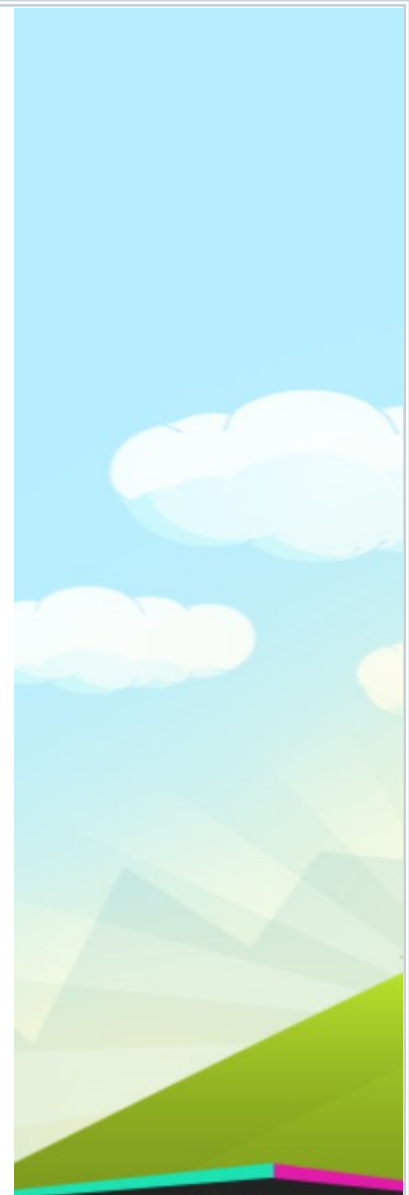
We will be getting messy exploring colour, shape and size and finding out about pre-historic worlds! We will also be taking time to learn about the changing seasons, celebrate some of the Autumn festivals and will end the term with a visit from Santa.

Our topics cover all areas of the EYFS curriculum with particular emphasis this term on Early Learning Goals for making relationships; shape, space and measures; people and communities and reading.

Learning objectives are given in more detail on our weekly plans displayed in the playroom. If you would like any further information please do speak to your child’s keyperson.

As usual the children will set the pace with our topics. How much time we spend on each is flexible allowing us to develop learning in child-led directions. We will not have a set topic each week but we will however have a colour/shape of the week:

Wk 1	05/9	orange/oval	Wk 5	03/10	blue/triangle
Wk 2	12/09	yellow/circle	Wk 6	10/10	green/rectangle
Wk 3	19/09	red/diamond	Wk 7	17/10	all shapes and colours
Wk 4	26/09	purple/square			



### COMMITTEE

Anyone who is interested in joining our committee or for further information please contact Nataile Humphrey on

[hnatalie51@yahoo.com](mailto:hnatalie51@yahoo.com)

### DATES FOR THE DIARY

Autumn Term begins on Monday 5th September and ends on Friday 16th December 2016.

Pre school closes for the half term break on Friday 21st October and reopens on Tuesday 1st November.

Photographer: Tues 18th October

# Windmill Pre-School Newsletter

Templefield Lower School,  
Malham Close, Flitwick  
Bedfordshire, MK45 1AJ

01525 719144  
www.windmillpre-school.org



## **Weather Rhymes for this term:**

September brings a cooler breeze with fruit and nuts upon the trees.

October turns the leaves to brown and chilly winds to blow them down.

Dull November dark and nippy making roads and pavements slippery.

December turns the rain to sleet and presents for your Christmas treat.

## **Learning at Home**

Wondering where to start?

These websites gives lots of ideas

[http://www.familylearning.org.uk/pre-reading\\_skills.html](http://www.familylearning.org.uk/pre-reading_skills.html)

[http://www.thecommunicationtrust.org.uk/media/262297/npdw\\_toptips\\_ey.pdf](http://www.thecommunicationtrust.org.uk/media/262297/npdw_toptips_ey.pdf)

## **Car Park**

Templefield Lower School and Woodlands Academy are having an automated car park barrier fitted. There will be no routine access for parents dropping off and collecting children. This action has been taken to ensure the safety of children and adults using the site. If you need to drive please use the Tesco car park and walk the short distance to preschool. Tesco fully support this "Park and Stride" initiative and are happy for parents to use their car park in this way.



[www.facebook.com/windmillpreschool](http://www.facebook.com/windmillpreschool).

Like and follow our Facebook page to get regular updates and reminders.

